

Bump-WASP-H

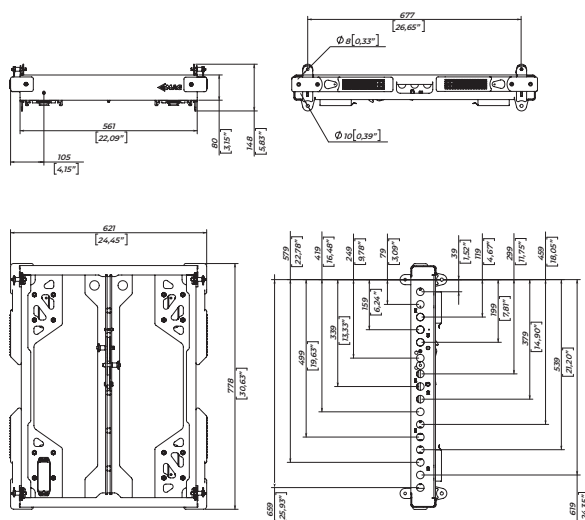
Versatile
mounting frame



Universal frame for arrays WASP series, which allows installation of linear arrays both in flight and on the ground. There are several installation options: as a transition frame from subwoofers to a WASP line array, hanging a WASP-8 array (no more than 24 pieces), hanging WASP-S series subwoofers (no more than 3 pieces), hanging WASP-S series subwoofers together with a line array WASP-8 (WASP-S series no more than 3 pieces with WASP-8 no more than 6 pieces), ground installation of the WASP-8 array on WASP-S series subwoofers (no more than 6 pieces). Optionally, the possibility of using a laser inclinometer is provided.

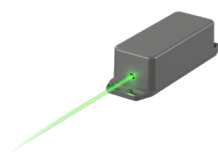


DIMENSIONS



ACCESSORIES

MN Mounting PLI-01
Precision Laser Inclinometer



Bump WASP Ext15



Bump-WASP-H-BMP



SPECIFICATIONS

Functions	Versatile mounting frame
Compatibility	WASP-8 WASP-S12 (Discontinued) WASP-S15 WASP-S18
Maximum number of WASP	WASP-8 - 24 pcs (Suspension) WASP-8 - 6 pcs (Ground stack) WASP-SXX - 3 pcs & WASP-8 - 12 pcs (Suspension) WASP-SXX - 6 pcs (Suspension) WASP-SXX - 3 pcs (Ground stack) WAR-X - 1 pcs & WASP-SXX - 1 pcs (Suspension)
Dimensions	778 x 621 x 148 mm / 30,63" x 24,45" x 5,83"
Weight	20 kg / 44,09 lbs

SAFETY INSTRUCTIONS

1. Entrust mounting equipment to the experienced professionals following current safety instructions. Improperly installed equipment can result in property damage, personal injury and/or liability to the installing contractor.
2. Always use safety cables to prevent equipment from falling during setup or while exploitation.
3. Carefully check the mounting surface of the wall. Make sure wall material can hold the weight of the speaker with the mounting added.
4. Make sure to securely fix all the mounting bolts. Loose bolts may become unscrewed with time due to vibration and create safety hazard.



ACCESSORIES

DATASHEET