



# WASP series

COMPACT LINE ARRAY

# LITTLE WONDER

## GET READY TO WIN

The WASP line array stands tall as the epitome of MAG Audio's technological prowess, ushering in a new era of precisely controlled sonic environments. Its scalable design philosophy makes it equally at home in intimate settings and colossal concert arenas, ensuring that every listener experiences unparalleled auditory bliss.

Crafted with precision and foresight, the WASP boasts tailor-designed neodymium components that provide ample headroom for pristine clarity and thunderous impact. Featuring two 8-inch woofers and a precision 1.4-inch driver, each element is meticulously engineered for extended operation at mind-bending sound levels. Enhanced voice coil cooling ensures sustained performance even under the most demanding conditions, while the integration of proprietary JD-lens coupling technology enables precise aiming and unparalleled beam compression control.

Offering both wide coverage and far-throw configurations, the WASP line array can effortlessly span distances of up to 100 meters, a feat previously reserved for much larger systems. This versatility allows the WASP to seamlessly adapt to any venue, from cozy bars and restaurants to sprawling arenas and outdoor festivals. Its interchangeable couplings facilitate swift transformation between coverage options, ensuring that no sonic nuance is left unexplored.

## WIELD THE POWER

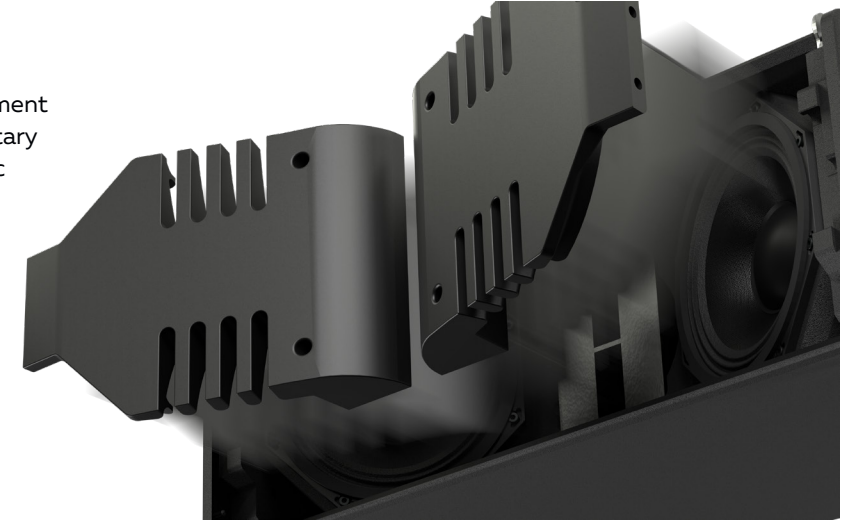
Complementing the WASP's prowess are the compact yet mighty WASP-S12 and WASP-S18 subwoofers, available for both ground-stacked and flown installations. These additions optimize rental stock and streamline the shipping process, further enhancing the efficiency and effectiveness of the entire system.

Complete with the AMPRACK amplification solution the WASP line array is an indispensable asset for touring and rental providers. Equipped to meet the demands of modern, diverse applications, it offers a level of performance and flexibility that is simply unmatched. For those who seek not only exceptional sound but also the satisfaction of knowing they possess the pinnacle of audio technology, the WASP line array stands as an unrivaled choice.



## SECRET WISDOM

The WASP-8 achieves flawless phase alignment through the innovative integration of a proprietary JD-lens device. This revolutionary acoustic lens revolutionizes the performance of the WASP-8 in three distinct ways: firstly, by establishing the ideal acoustic load for its 8-inch woofers, thereby enhancing their mid-range response; secondly, by mitigating the intermodulation effect through the minimization of the radiation area of the 8-inch woofers; and finally, by ensuring precise phase alignment between the drivers, thus optimizing overall coherence and fidelity.



## INSTALLATION WHIZ

The design concept behind the WASP line array prioritizes seamless installation and user-friendly operation. Its mounting system embodies simplicity and functionality, enabling swift assembly by a single individual, thereby reducing installation times and manpower requirements.

The precision rear mounting hardware offers a versatile splay angle range of 0° to 10° in 1° increments, facilitated by the Quick-Hook technology, ensuring effortless and rapid setup.

## WEALTH OF OPTIONS

The mounting accessories for the WASP line array set a new standard with their versatility and user-friendly design. The universal mounting frames, Bump-WASP-H and Bump-WASP-L, provide rapid deployment and extensive adjustment capabilities, catering to both ground stack and flown cluster configurations with ease. To streamline transportation, a selection of carts and cases is available, ensuring effortless and compact transport while keeping your speakers protected and accounted for.







# WASP-8

## PASSIVE LINE ARRAY MODULE

Passive line array module, based on dual 8" woofers with 1,4" throat HF driver. Compact size, yet significant power and performance, numerous installation options – it's what makes MAG WASP-8 an ultimate solution for different applications, from corporate parties to mid-sized concerts.



Frequency Response (-10dB)	70 - 20000 Hz
Peak SPL <sup>1</sup>	141 dB (single cabinet)
Sensitivity (1W/1m)	98 dB Low / 110 dB High
LF Driver	2x 8", 2,5" VC
HF Driver	1,5", 2,8" VC
Impedance	16 Ohm Low / 16 Ohm High
Horizontal coverage	100°
Vertical coverage	Depends on the number of cabinets
Nominal power <sup>2</sup>	600 W Low / 100 W High
Connectors	2x Neutrik Speakon
Dimensions (W×H×D), mm	622x279x422 mm
Net weight, kg	22 kg
Shipping weight, kg	25 kg
Mounting	Integrated flying hardware; 0° - 10° splay angle
Enclosure material	Plywood; wear-resistant paint
Grill	Steel grill, synthetic acoustically transparent cloth

<sup>1</sup> - pink noise, filtered according to AES 2 - 2012, crest factor 12 dB  
<sup>2</sup> - based on transducer power measured according to AES 2 - 2012

The WASP-S15 has been designed to be a reliable low-frequency support for WASP line array. Based on 15" LF woofer, the system delivers 137 dB of sound pressure. Featuring specifically designed integrated hardware, WASP-S15 can be used both in a stack or in a flown cluster.

Frequency Response (-10dB)	35 - 300 Hz
Peak SPL <sup>1</sup>	137 dB
Sensitivity (1W/1m)	95 dB
Driver	15", 4" VC
Impedance	8 Ohm
Nominal power <sup>2</sup>	1000 W
Connectors	4x Neutrik Speakon
Dimensions (W×H×D), mm	620x464x765 mm
Net weight, kg	48,4 kg
Shipping weight, kg	51,5 kg
Mounting	Integrated flying hardware, M20 distance adapter
Enclosure material	Plywood; wear-resistant paint
Grill	Steel grill, synthetic acoustically transparent cloth

<sup>1</sup> - pink noise, filtered according to AES 2 - 2012, crest factor 12 dB  
<sup>2</sup> - based on transducer power measured according to AES 2 - 2012

Purpose-made WASP-S18 has been designed to be a reliable low-frequency support for Wasp line array. Based on 18" LF woofer, the system delivers 141 dB of sound pressure. Featuring specifically designed integrated hardware, WASP-S18 can be used both in a stack or in a flown cluster.

Frequency Response (-10dB)	32 - 200 Hz
Peak SPL <sup>1</sup>	141 dB
Sensitivity (1W/1m)	98 dB
Driver	18", 4" VC
Impedance	8 Ohm
Nominal power <sup>2</sup>	1300 W
Connectors	4x Neutrik Speakon
Dimensions (W×H×D), mm	622x567x765 mm
Net weight, kg	47,8 kg
Shipping weight, kg	50,8 kg
Mounting	Integrated flying hardware, M20 distance pole adapter
Enclosure material	Plywood; wear-resistant paint
Grill	Steel grill, synthetic acoustically transparent cloth

<sup>1</sup> - pink noise, filtered according to AES 2 - 2012, crest factor 12 dB  
<sup>2</sup> - based on transducer power measured according to AES 2 - 2012

# WASP-S15

## ARRAYABLE PASSIVE SUBWOOFER



# WASP-S18

## ARRAYABLE PASSIVE SUBWOOFER





# WASP ACCESSORIES

## Bump-WASP-L lightweight frame



The Bump-WASP-L is a lightweight version of the frame for the WASP-8, which allows for both flying and ground-stack use of a line array mounted on WASP subwoofers. Optionally, the possibility of using a laser inclinometer is provided.

Connecting a Bump-WASP-L frame possible on the top of a WASP-8. Place the Bump-WASP-L flying frame on the top of a WASP-8. You can choose between 0°, 2,5°, 5° and 7,5° for front tilt of the WASP-8 cabinet. For additional tilt angle, use the Bump-WASP-Ext15 accessory.

Also building the ground stack using the Bump-WASP-L frame. Install the Bump-WASP-L frame onto the WASP-S12/S15/S18 subwoofer.



## Bump-WASP-H versatile frame



Versatile frame for WASP-8, WASP-S12, WASP-S15, WASP-S18. Optionally, the possibility of using a laser inclinometer is provided.

Connecting a Bump-WASP-H frame possible on the bottom of a WASP-8 module. Place the cabinet on the top of the Bump-WASP-H frame, and you can choose between 0°, 2,5°, 5° and 7,5° for front tilt of the WASP-8 cabinet.

The Bump-WASP-H frame possible as place the Bump-WASP-H flying frame on the top of a WASP-S12/S15/S18 and also on the bottom of a WASP-S12/S15/S18.



## Bump-WASP-H-CW frame

Transportation Cart for WASP-8, WASP-S12, WASP-S15, WASP-S18 is the Bump-WASP-H-CW frame on the connecting castor wheels.



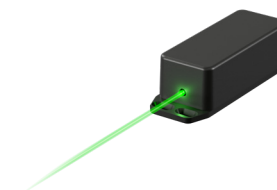
## Cart-WASP-34A transportation cart



Cart-WASP-34A is a covered cart that can be used for convenient storage and easy transportation of WASP-8 line array stacks.



## MN Mounting PLI 01 inclinometer



Precision Laser Inclinometer. Compatible by Bump-WASP-L and Bump-WASP-H.

## Bump-WASP-Ext15 angle extension



Bump-WASP-Ext15 can provide up to 15° of the frontal tilt of the WASP-8 module when building the ground stack using Bump-WASP-L, Bump-WASP-H mounting frame.







# WASP CASES

## Bump-WASP-L-FC-2

Flying case for two Bump-Wasp-L



## Bump-WASP-H-FC-2

Flying case for two Bump-Wasp-H



## WASP-FC-3

Flying case for 3 pcs of WASP 8



## WASP-FC-4

Flying case for 4 pcs of WASP 8

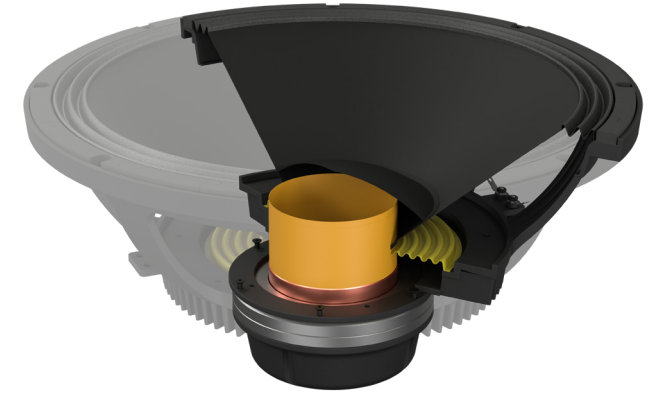


S218 is a next-generation touring subwoofer designed to bring the ultimate low-frequency reinforcement. Easy to install, reliable, and designed to withstand the most challenging transportation and usage conditions.

The S218 was made with absolute touring and rental utility in mind: it can be flown as an array using integrated mounting hardware. Available for both standard and cardioid use.

Frequency response (±3dB)	30 - 200 Hz
Frequency range (-10dB)	25 - 280 Hz
Peak SPL <sup>1</sup>	146 dB
Sensitivity (1W/1m)	100 dB
LF Driver	2x18", 4" VC
Impedance	4 Ohm
Nominal power <sup>2</sup>	2500 W
Connectors	Speakon rear Speakon front
Dimensions (W x H x D)	1180 x 569 x 780 mm 46,46" x 22,40" x 30,7"
Weight	83 kg / 183 lbs
Mounting	M20 distance pole adapter Integrated array hardware
Enclosure material	Plywood, wear-resistant paint
Speaker protection	Steel grill, acoustically transparent backing

<sup>1</sup> - pink noise, filtered according to AES 2 - 2012, crest factor 12 dB  
<sup>2</sup> - based on transducer power measured according to AES 2 - 2012



The unique SilentFlow laminar flow port technology of our proprietary phase inverter minimizes air noise at high output levels by reducing turbulence, plus increases its low-frequency efficiency.

The powerful bass-reflex subwoofer system, the dual 18" vented box - delivering an unparalleled 146 dB peak SPL - is compatible with MAG's Uni-Preset technology, and has undergone extensive development and a long way of testing to meet the highest professional standards. Custom-engineered woofers with carbon fiber cones boast a long-throw triple roll surround and a double silicon spider allowing significant linear movement without distortion.

# S218

## MEGA SUBWOOFER



For ground installation, the convenient stacking rails allow for quick cabinet positioning while preventing accidental side movement. The S218 can even be stacked in a vertical position to minimize the occupied space, with side interlocking feet making the stack extremely solid and easy to assemble.

This feature allows the S218 to be seamlessly coupled with every MAG Audio speaker straight out of the box.

The SilentFlow vent port technology employs a unique design to minimize air noise at high levels by utilizing a specialized shape that reduces any turbulence and enhances low-frequency efficiency.

The core neodymium magnet system was made 25% lighter, which helps reduce the overall weight of the subwoofer while at the same time enhancing its performance.

Optimized in FEMM for precise driver control and confidently working in the infra mode. To minimize distortions, the magnetic system includes upper and lower aluminum demodulation rings, which also improve heat dissipation.

A high-efficiency copper voice coil enhances control and maximizes power handling.





# ACCESSORIES S218

## FB-S218 - Flying adapter



The Flybar S218 - for suspension of several S218 subwoofers. Made of high-quality steel and specially designed by engineers for reliable mount of up to 12 subwoofers in a suspension. It has a strong construction for easy mounting.



## CB-S218 - Wheeled board



Caster Board S218 is a lightweight board on wheels specially designed by engineers for convenient and quick mounting in front of the S218 subwoofer grid and its transportation.



## CF-S218 - Wheeled frame



The Caster Frame S218 is a wheeled frame specially designed by engineers for the rapid transport of several S218 subwoofers. It is easy to install so that it is securely fixed - the legs of the S218 fit into the grooves of the frame. In addition, its strong design allows for the transportation of up to 3 subwoofers at once.



The front grille of the S218 incorporates a Speakon connector for a cleaner look and added convenience in cardioid setups. An M20 adapter facilitates pole mounting a top speaker (vertical use).

The S218 offers versatile rigging options for flyable arrays using built-in mechanics. Ground stack application is provided with both horizontal and vertical orientations. Convenient guide rails ensure quick and secure positioning, preventing accidental lateral movement.





2 Merezhna str., Bila Tserkva,  
Kyiv region, 09100, Ukraine  
Tel./Fax.: +38 044 2774789  
e-mail: [info@mag-audio.com](mailto:info@mag-audio.com)  
**[www.mag-audio.com](http://www.mag-audio.com)**

2025