

PMR4000RMKIII

Instruction manual

PMR4000RMKIII manual



Features

The Apart PMR4000RMKIII is a professional multi-source player with integrated FM RDS / DAB / DAB+ tuner, internet radio, UPnP and USB media player, compatible with MP3, WMA, FLAC and WAV audio files. Spotify Connect allows you to stream music through the PMR4000RMKIII, and can be controlled from the Spotify app on your computer, smartphone, or tablet. The unit is equipped with analog outputs, optical digital output for the digital media player, wired Ethernet and Wifi 2.4G / 5G. The unit can be remote controlled with the included handheld infrared remote control. The maximum analog output level can be preset at the back to match the output level of other audio sources. Because this device features a menu guided setup and operation, it is very practical and user-friendly.

Important safety instructions

- Please check the packing for any kind of damage upon reception of the goods. If the packing is damaged, please contact your dealer before opening it.
- Read all documentation before operating your equipment.
- Keep all documentation for future reference.
- Keep the carton and packing material, even if the equipment has arrived in good condition.
- Should you ever need to send the unit back, use only the original factory packing.
- Do not spill water or other liquids on or into the unit.

- Make sure power outlets conform to the power requirements listed on the back of the unit.
- Do not use the unit if the electrical power cord is damaged.
- Always operate the unit with the AC ground wire connected to the electrical system ground.
- If there are high signal levels at the inputs, then please have gain controls on amplifiers turned down during power-up to prevent speaker damage.
- Do not connect the inputs / outputs of amplifiers or consoles to any other voltage source, Such as a battery, mains source, or power supply, regardless of whether the amplifier or console is turned on or off.
- Power down and disconnect the units from the mains voltage before making connections.
- Do not use the unit near stoves, heat registers, radiators, or other heat-producing devices.
- Do not remove the cover. Removing the cover will expose you to potentially dangerous voltages.
- Do not drive the inputs with a signal level higher than that which is required to drive equipment to full output.
- In case of malfunction this device should be serviced by qualified service personnel only.

Front panel



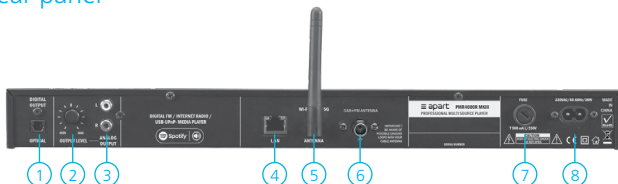
1. **Power button:** Push to power on or off. This button powers off the unit entirely in the off position. The power led will not light up when in the off position. During normal operation, the power led lights up blue, in standby, the led is red.
2. **USB port:** standard USB port to connect removable media such as USB memory sticks. Some USB memory sticks and external hard disks may not work on this port. This is not a malfunction. Recognized files are MP3, WMA, FLAC and WAV. Please note that files containing special characters may not be recognized by the unit, and therefore will not be played back. The scroll list will show all files on the media, including unknown files such as JPEG and other files, but these will be skipped. The scroll list is limited to files with less than 8 characters in the file name. Files with special characters in the file name may not be displayed correctly.
3. **Standby button:** Press once to enter standby mode with clock. The Spotify and UNDOK apps can also wake the unit from Standby. Press and hold for 3 seconds for standby mode without clock, and to cut off main power and network connection.
4. **Internet button:** direct access to the internet radio function.

5. **FM / DAB+ button:** direct access to the FM and DAB radio functions.
6. **Medioplayer button:** direct access to Spotify and the USB/UPnP media player functions. Please note that the display will show Spotify, shared media = UPnP, USB playback = USB. Use the rotary selector "9" to highlight required function and push selector "9" to confirm your selection.
7. **LCD display with led backlight:** white text on blue background.
8. **Menu button:** push to enter or exit the menu.
9. **Rotary selector:** turn to scroll through the items in the display, push to select the highlighted item or to confirm your selection.
10. **Preset back button:** push to select the previous preset.
11. **Preset next button:** push to select next preset. Please note that these buttons will have no function if no presets have been stored in internal memory.
12. **Info button:** Press the „INFO“ button repeatedly to browse through diverse information. The type of information and whether information is displayed all depends on the broadcasting station or connected media. The info button works in all operating modes.
13. **Tune back button:** press to tune to a previous radio station: the tuner will search down the band and stops at the first station with sufficiently strong reception. Works in both FM and DAB modes.

14. **Tune forward button:** press to tune to next station: the tuner will search up the band and stops at the first station with sufficiently strong reception. Works in both FM and DAB modes.
15. **Back button:** press to go to the previous menu item. This will have no function if there is no previous menu page. If you want to exit a menu, press the "menu" button to return to the main screen.
16. **Repeat button:** push to enable repeat mode. This will work when playing back from USB or UPnP servers. Repeat mode will repeat all selected tracks. It is not possible to repeat a single track.
17. **Stop button:** push to stop playback.
18. **Play/Pause button:** push to start or resume playback or to pause playback.
19. **Previous track button:** push to play previous track from USB or UPnP.
20. **Next track button:** push to play next track from USB or UPnP.

Note: *Not all operation functions are accessible via the front panel controls. For example, storing presets in the tuner can only be done via the infrared remote, or changing the digitally controlled playback volume.*

Rear panel



1. **Optical digital output:** standard Toslink® optical digital output. This output carries the digital signal from USB/UPnP media playback and internet radio only.
2. **Output level adjustment:** turn this potmeter to set the analog output to a certain level. This feature comes in handy when more sources are in use in the same system.
3. **Analog output on cinch connectors:** white = left channel, red = right channel.
4. **Network cable connector:** connect to a normal computer network. For internet radio playback, the network must have an accessible broadband internet connection. The connector has 2 leds for diagnostic purposes: when connected to a network, the green led will stay lit. When data is being transferred, the orange led will blink.
5. **Wifi antenna:** connect the wi-fi antenna here.
6. **FM DAB+ antenna:** connect the FM DAB+ antenna wire here. When you want to connect the input to an antenna or cable distribution network, you need to connect through a galvanic separation transformer designed for FM signals. Never connect to a cable distribution network without separation transformer

because this may lead to unpredictable behavior and even system damage.

7. **Mains fuse:** replace only with a fuse of the same voltage and current rating: T500 mA / 250 V
8. **Mains inlet.** Connect to a standard mains receptacle 230VAC/50-60Hz.

Getting started

FM DAB+ Antenna:

Connect the tuner antenna using the wire antenna supplied with the unit. Under normal conditions, the antenna will guarantee good reception of strong radio stations.

If necessary, connect to an amplified antenna or cable network using an FM signal separation transformer. Never connect the antenna input to a powered antenna or cable network without separation transformer. Failure to do so will result in unpredictable behavior or even malfunction and system damage!

Signal output:

Connect the analog output jacks to your system's line input using standard RCA cables. The analog output connectors carry the signals from the selected playback media. Alternatively, connect the optical digital output to your digital playback system. The optical digital jack is a standard Toslink® optical connector and carries a digital SPDIF signal from the USB/UPnP/internet radio. Turn the output level potmeter to a position that suits your needs.

Network:

Connect a standard RJ45 cable from your network router to the unit.

W-Lan:

For wireless operation, attach the antenna to the „Wi-Fi 2.4G / 5G antenna“ connector at the back of the unit. Your Wifi protection password may be required to access the wireless network.

USB port:

Connect a standard USB memory stick here, formatted in FAT32 file system. Please note that files and/or folders containing special characters in their names may not be recognized by the unit, and therefore may not be played back. The scroll list will show all files on the media, including unknown files such as JPEG and other files, but these will be skipped. The scroll list is limited to files with less than 8 characters in the file name. Files with special characters in the file name may not be displayed correctly in the scroll list.

Example:

A music file with the name Aegaeis.mp3 will be recognized and played back. The same music file with the name Aegäis.mp3 will not be recognized and will not be played back because it contains an "ä", this is a special character. The same applies to files and folders with names containing more than 8 characters.

The information in the ID3 tag however will be displayed correctly. The reproduction, duplication and copying of copyright protected material, as well as the distribution, circulation, public access to or even the rental of these, without explicit authorization of the copyright holder, is strictly prohibited. The unit can only read

MP3, WMA, FLAC and WAV files. may not be displayed correctly in the scroll list.

Remote control:

The handheld infrared remote control requires two „AAA“ batteries for operation. Inserting/changing batteries:

Remove the battery compartment lid carefully.

Insert new batteries and ensure correct polarity, as graphically displayed inside the compartment. Replace the battery lid carefully.



Information on handling batteries/rechargeable batteries

Please adhere to the following information when handling batteries and rechargeable batteries:

- Keep batteries out of children's reach.
 - Batteries are hazardous waste and do not belong in household waste.
-
- Ensure correct polarity when inserting batteries.
 - Always remove batteries when the remote control is not in use for longer periods of time.

Power supply:

Plug in the power cable and connect it to a power receptacle 230V/50-60Hz. Now turn on the unit and wait until the system has started up. This will take only a few seconds.

Now the unit will start with the setup wizard. Choose "YES" shown in the display by turning the rotary selector, highlight "Yes" and push the rotary selector to confirm your selection.

Select the date time format: 12 hr or 24 hr time display, push to select, confirm and proceed.

Auto update function: select "update from network" or "no update" and push to select and proceed.

Set your timezone, daylight saving time option and WLAN region. Now the unit will start to scan for wireless networks. When a network is found, follow the on-screen instructions to finish the setup wizard. When no wireless networks are available, select "wired" and proceed until the setup wizard has finished. Detailed information on network settings will be explained below.

After finishing the setup wizard, select a module via the push buttons or via the menu: FM radio, internet radio, USB or UPnP.

Spotify Connect



English (US)	Use your phone, tablet or computer as a remote control for Spotify. Go to spotify.com/connect to learn how
Czech	Hudbu ze Spotify můžeš ovládat na dálku přes telefon, tablet nebo počítač. Na stránce spotify.com/connect najdeš, jak na to.
Danish	Brug din telefon, tablet eller computer som fjernbetjening til Spotify. Gå til spotify.com/connect for at finde ud af, hvordan du gør
German	Verwende dein Smartphone, Tablet oder deinen Computer als Fernbedienung für Spotify. Auf spotify.com/connect erfährst du mehr.
Greek	Χρησιμοποίησε το τηλέφωνο, το τάμπλετ ή τον υπολογιστή σου ως τηλεχειριστήριο για το Spotify. Πήγαινε στο spotify.com/connect για να μάθεις πώς
Spanish	Usa tu teléfono, tu tablet o tu computadora como control remoto de Spotify. Para más información, entra a spotify.com/connect
Finnish	Käytä puhelinta, tablettia tai tietokonetta Spotifyn kaukosäätimenä. Katso tarkemmat tiedot osoitteesta spotify.com/connect .
French	Utilisez votre téléphone, votre tablette ou votre ordinateur comme une télécommande pour contrôler Spotify. Accédez à spotify.com/connect pour en savoir plus.
Hungarian	Használd a telefont, táblagépet vagy számítógépet a Spotify távirányítójaként. További tudnivalókat a spotify.com/connect oldalon olvashatsz.
Indonesian	Gunakan ponsel, tablet, atau komputermu sebagai remote kontrol untuk Spotify. Buka spotify.com/connect untuk mengetahui caranya

Italian	Usa il tuo cellulare, tablet o computer come telecomando remoto per Spotify. Vai su spotify.com/connect per scoprire come
Japanese	スマホ、タブレット、パソコンをリモコンにして、Spotify で音楽を楽しめます。詳しくは spotify.com/connect をご覧ください。
Malay	Gunakan telefon, tablet atau komputer anda sebagai alat kawalan jauh untuk Spotify. Pergi ke spotify.com/connect untuk mengetahui bagaimana
Norwegian	Bruk telefonen, nettbrettet eller datamaskinen som en fjernkontroll for Spotify. Gå til spotify.com/connect for å lære hvordan
Dutch	Gebruik je telefoon, tablet of computer als een afstandsbediening voor Spotify. Ga naar spotify.com/connect om te leren hoe je dat doet
Polish	Wykorzystuj telefon, tablet lub komputer jako pilota, aby sterować aplikacją Spotify. Wejdź na spotify.com/connect , aby dowiedzieć się, jak to zrobić.
Portuguese	Usa o teu telemóvel, tablet ou computador como comando do Spotify. Vai a spotify.com/connect para saberes como
Swedish	Använd din telefon, surfplatta eller dator som fjärrkontroll för Spotify. Gå till spotify.com/connect för att ta reda på hur
Turkish	Telefon, tablet veya bilgisayarını Spotify için uzaktan kumanda olarak kullan. Nasıl yapacağını öğrenmek için spotify.com/connect adresine git
Vietnamese	Dùng điện thoại, máy tính bảng hoặc máy tính làm điều khiển từ xa cho Spotify. Truy cập spotify.com/connect để tìm hiểu cách thức
Traditional Chinese	將你的手機、平板或電腦當成 Spotify 遙控器。前往 spotify.com/connect 了解如何使用

Music server: preparing the UPnP server(s)

UPnP technology can run on many media that support IP including ethernet. No special device driver support is necessary. Common network protocols are used instead. The UPnP architecture allows device-to-device networking of personal computers, networked electronic devices and wireless devices. It is a distributed, open architecture protocol based on established standards such as the Internet Protocol Suite (TCP/IP).

A UPnP media server is the server (a 'master' device) that provides media library information and streams media data (audio files) to UPnP-clients on the network. It is a computer system or a similar digital appliance that stores supported music files and shares these with other devices on the network. In order to play music from a local network computer or device, you will have to configure the computer or device to allow media sharing first. We will explain how to set up the UPnP service on Windows 7 machines. Make sure that the UPnP service and all network sharing related services are running, and check the sharing settings in network and sharing center on your computer. Make sure the computer and PMR4000RMKIII are connected to the same local area network and check the settings of the router and media server.

In Windows 7: Control Panel\All Control Panel Items\Network and Sharing Center\Advanced sharing settings:

Network discovery must be on.

File and printer sharing must be on.

Public folder sharing must be on.

Media streaming options: click "choose media streaming options", when the PMR4000RMKIII is connected to the same network and

has received an IP address, it will be shown in the list as follows: Apart PMR4000RMKIII (followed by a unique identifier). Select "Allowed" and save the changes. Click on "Customize" in the dialog window and check the media streaming settings. Windows default sharing settings do not always work as expected. Choose "Make all of the media in my library available to this device" when in doubt.

When any of these settings is incorrect, the unit will not be able to discover your media server(s) and shared media. Please note that redirected media folders may not be detected by the UPnP device, depending on the network and firewall settings implemented by network administrators. Storing the shared media folders locally on the computer and adding them to your music library's shared folders may resolve this issue. Network firewalls may prevent accessing shared media. Ask your network administrator for assistance in such cases.

Example:

The most commonly used UPnP server is Windows Media Player (Version 10 or later). Proceed as follows to set up media file sharing on most Windows 7 machines:

1. Make sure your PC is connected to the network and set it up as a UPnP server.
2. Ensure that the PMR4000RMKIII has been turned on and is connected successfully to the same network.
3. Add supported audio files (MP3/WMA/FLAC or WAV) and/or folders you want to share with your PMR4000RMKIII to your Windows Media Player's media library.

Music player PMR4000RMKIII:

1. Select USB/UPnP-server.
2. Select Shared media: a list of connected UPnP servers will show up on the display. If no servers are visible, check the settings on the computer or media sharing device.
3. Select a server and click the rotary knob to confirm the selection. Select Music or play lists and browse through the selection options. Always click on the rotary selector to confirm your selection. Enjoy playback of the shared media files.

The reproduction, duplication and copying of copyright protected material, as well as the distribution, circulation, public access to or even the rental of these, without explicit authorization of the copyright holder, is strictly prohibited. The unit can only read MP3, WMA, FLAC and WAV files from USB memory sticks and UPnP servers.

Network sharing settings. This example shows the settings from a Windows 7 computer and may be different from your specific system: Control Panel\All Control Panel Items\Network and Sharing Center\Advanced sharing settings:

Network discovery

When network discovery is on, this computer can see other network computers and devices and is visible to other network computers. [What is network discovery?](#)

- ☒ Turn on network discovery
- ☐ Turn off network discovery

File and printer sharing

When file and printer sharing is on, files and printers that you have shared from this computer can be accessed by people on the network.

- ☒ Turn on file and printer sharing
- ☐ Turn off file and printer sharing

Public folder sharing

When Public folder sharing is on, people on the network, including homegroup members, can access files in the Public folders. [What are the Public folders?](#)

- ☒ Turn on sharing so anyone with network access can read and write files in the Public folders
- ☐ Turn off Public folder sharing (people logged on to this computer can still access these folders)

Media streaming

When media streaming is on, people and devices on the network can access pictures, music, and videos on this computer. This computer can also find media on the network.

Choose media streaming options...

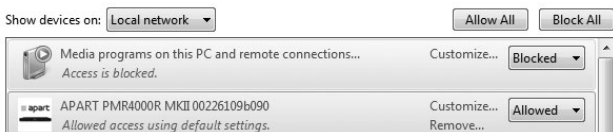
File sharing connections

Windows 7 uses 128-bit encryption to help protect file sharing connections. Some devices don't support 128-bit encryption and must use 40- or 56-bit encryption.

- ☒ Use 128-bit encryption to help protect file sharing connections (recommended)
- ☐ Enable file sharing for devices that use 40- or 56-bit encryption

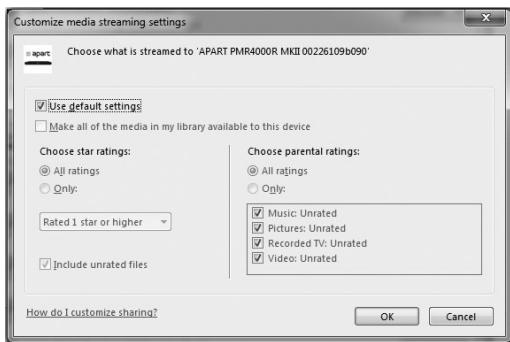
Media streaming options when Apart PMR4000RMKIII has been recognized on the network:

Control Panel\All Control Panel Items\Network and Sharing Center\Media streaming options



In this screenshot we see the Apart PMR4000RMKIII showing up in the network! You have to allow the unit to access the UPnP server's media files!

Click "Customize" in the field showing the Apart PMR4000RMKIII to check media streaming settings.



Select "Make all of the media in my library available to this device" instead of "Use default settings".

Normally this is optional, but when your media files have been redirected to a server location, or a network connected hard disk (NAS), it may be necessary to select this option.

It is possible to access media files and folders present on most so called network drives (NAS). Consult the manuals of these devices to check if UPnP is supported and how to configure media sharing. Usually the configuration settings of this kind of network drives are accessible via a web browser.

UPnP is also supported on computers with other operating systems. Consult the manuals or help files of these computers to figure out the settings for UPnP operation.

The guidelines shown in this manual are for reference only and may differ from your specific situation. Consult a network specialist or system administrator if you fail to set up a UPnP server.

Basically the following rules are valid for computer based systems: check all settings and start with basic troubleshooting. Don't try to establish a UPnP system if no network access is available, or if your router or computer firewall has been set up to block all kinds of media sharing. Often, third party firewalls will prevent access to media, making it difficult or even impossible to set up a working media sharing system, even if the settings in your operating system or network look perfectly ok. On some computers, services that are vital for UPnP operation have been disabled for security reasons. Such machines can not be configured as UPnP servers. Consult a computer or network specialist in these cases.

Some networks have restricted internet access. On such networks, internet radio and/or UPnP operation may not be possible. When

connecting to a network via Wifi, make sure the unit is set up close to the wireless transmitter. Weak Wifi reception usually results in limited connectivity and insufficient bandwidth. By default, the PMR4000RMKIII may not detect weak Wifi access points. Consider using wired Ethernet in case of doubt.

Connecting PMR4000RMKIII to a network:

You need a network connection via a wired or wireless router for "Internet radio" and "UPnP" operation modes. The router must have a broadband internet connection for internet radio operation and to perform software updates.

When you select "Internet radio" or "UPnP" mode, PMR4000RMKIII will try to connect to a network. If this is the first time that a connection has been made or previously accessed networks are not accessible, then the "Network Wizard" will start. To start the "Network Wizard" manually, select the following:

MENU > System settings > Network > Network Wizard

Once started you can enter the following information:

W-LAN region (select a country/select a region from the list)

Network name (select the desired network). An encrypted wireless network will require a password.

Enter the network password: use the rotary control to move the cursor through the displayed characters. Press the rotary control to confirm the selected character.

Select "BKSP" to delete the last character selected.

Select "CANCEL" to cancel your input.

Select "OK" to confirm the entered name/code and to try to establish a connection to the selected network.

The unit will return to the password entry window if no connection could be established.

If your wireless router has a feature called "push button configuration", you can access the "PBC Wlan setup" menu on PMR4000RMKIII. Follow the instructions shown on the display to proceed and finish automatic wireless setup. Please note that this feature requires a PBC compatible Wlan router. Consult the manual of your Wlan router if necessary.

Manually connecting to a network:

In the Main menu/System settings/Network/Manual settings you can select wired or wireless setup.

All parameters must be entered manually, available networks are not shown. Use the network setup wizard if you want to be able to select available networks. Manual setup gives you access to more network specific parameters:

Select the preferred connection: wired or wireless.

Select if the Direct Host Configuration Protocol (DHCP) is to be used:

- DHCP enable: activates use and switches on the automatic reception of network data.
- DHCP disable: deactivates use and carries on with the manual entry of network data.

- IP settings: set the IP address and the subnet mask.
- Gateway address: set the gateway address.
- DNS: set the primary and secondary DNS address.
- SSID: set the wireless network identification.
- Authentication: set the preferred method of authentication: Open, Pre-shared key (PSK), Wifi protected access (WPA) or WPA2.
- Encryption type: select the appropriate encryption type: Disabled (off) or WEP (Wired equivalent Privacy) for open or PSK. TKIP (Temporal Key Integrity Protocol) or AES (Advanced Encryption Standard).
- Key: now enter the code for the wireless network.

Entering names is done via the rotary control: highlight a character and press the rotary control to enter the highlighted character.

- Select "BKSP" to delete the last character selected.
- Select "CANCEL" to cancel your input.
- Select "OK" to confirm and store the characters you entered.

Network profile:

If for any reason you want to delete a previously used network profile, enter the main menu/system settings/network/network profile and selected the network profile you want to delete. Press the rotary control to confirm the selection. The network profile will be deleted.

Internet radio:

The internet radio allows you to listen to numerous internet radio stations worldwide. Broadband internet access and a wired or wireless network connection are necessary to use this feature.

You can store presets for easy access without the need to go through all possible selection parameters. The last selected radio station will be maintained when powering off the unit. A list of recently selected radio stations is also stored for easy access to previously accessed stations.

Storing a radio station to memory:

10 memory presets are available for storing. Tune to an internet radio station. Press and hold a numeric key 1 to 10 on the handheld remote until "Preset stored" appears on the display. When the memory location was already occupied, the unit will overwrite the selected location without further notification.

Of << of >> langer ingedrukt houden voor opslaan

Selecting a preset: briefly press a numeric button on the remote or push "<<PRESET" or "PRESET>>" on the unit's front panel to select a preset. This function is available only if more than one radio stations have been stored in the internal memory.

Station information: Press the "INFO" button repeatedly to browse through diverse information. The type of information and whether information is displayed all depends on the selected broadcasting station.

Search for a radio station:

Switch to internet radio. Make sure a network connection has been established and broadband internet access is available.

Enter the menu/station list/stations.

You can now select a station based on location, genre, popularity and recently added. Browse through the various options and select a station.

Internet radio portal:

The internet radio portal allows you to listen to internet radio through your computer and lets you organize your favourite stations in folders.

The portal is free of charge.

To register your unit on this portal, you need an access code: Search for the access code on your PMR4000RMKIII: in internet radio operation mode, press the menu button, select "Station List", scroll down to "Help" and select "Get Access code".

The unit now shows a code on the display. Write it down, you will need it to register the unit on the web portal.

On your computer, open your web browser and enter this URL:

www.wifiradio-frontier.com

If this is your first visit, you will need to register by creating a login and a password. Enter a valid email address and create a password, enter the access code from the unit. Model name is: Jupiter

Confirm your data entry. Your account will be created instantly.

You can now browse internet radio stations online via the web portal, add them to your favorites and organize the added stations in folders.

These folders and favourite stations will immediately show up on your PMR4000RMKIII. To access the added favorites, press the

menu button, select "Station List", "My Favourites".

Now the folders with the added favourite stations you created online will show up on the unit. You can select them via the Menu/ Station List/My Favourites.

Please note that it is possible to create a new login, with a new access code. All previously added stations will be lost and replaced by the last login you created for the specific unit. The PMR4000RMKIII will automatically generate a new access code. On the website, you can edit your login preferences, add another internet radio unit to your account or synchronize your favourites with another internet radio unit.

General functions:

Software upgrade: you can search for a software update manually: enter the menu, system settings, software update. You can also use the Auto-check setting. When a new software version is available, you will be asked to download and install it on the unit. By performing a software upgrade, all user settings are maintained. Do not unplug the unit or power it off during a software upgrade. Doing so will cause the unit to stop working.

Factory reset: If for any reason you would like to change the settings and want to start all over again, press "menu", scroll down to "System settings", "Factory reset" and select yes. Press the rotary selector to confirm. The unit will restart and will ask you to start the setup wizard. Select "no" if you want to set up the unit manually. Select "yes" for standard guided setup.

Note: If you have registered the unit on the internet portal, the registration will be maintained.

Language: Select system settings, Languages and select the

language that suits you best. Available languages are: English, German, French, Italian and Spanish.

Time: select system settings, time/date and configure the time settings. You can choose to automatically set the time from the internet or from radio. Alternatively, enter the time and date manually. You can determine your time zone, format and daylight saving settings here.

We advise you to set the time setting to automatic and to select the update from network function if a broadband internet connection is available.

Remote control: the handheld remote control allows you to control all basic features of the unit via infrared.

You will also need the remote to store FM radio and internet radio presets.

Additionally, you can control the unit's volume digitally via the remote. Please note that the volume setting will always be set to the max setting after cycling the power or waking up the unit from standby. The maximum analog output level can be preset using the volume knob at the back of the unit. Set the volume knob to adjust the analog output level of the PMR4000RMKIII to be equal to the level of other sound sources in your system.

Equalizer: the equalizer function is available on all modules. Set the equalizer to suit your taste. Various presets are available. These presets can not be edited, except the "My EQ" setting.

FM / DAB+ radio operation:

Press the FM DAB+ button or select "FM" or "DAB+" in the main menu for radio operation.

Tuning to available radio stations:

Press the "RADIO TUNE>>|" or "|<< RADIO TUNE" to start an automatic station search. The search function will stop, once a station has been found. To interrupt the automatic search function, press the encoder while the unit is searching. You can manually correct the frequency gradually by turning the rotary encoder.

To access additional radio settings: press the "MENU" button:

Scan setting: Search for strong stations only "Yes or No".

Audio setting: Listen in mono only "Yes or No". Listening in mono is a viable option when listening to a weak station. It will help to reduce reception noise.

Storing a radio station to memory:

10 memory presets are available for storing. Tune to a radio station. Press and hold a numeric key 1 to 10 on the handheld remote until "Preset stored" appears on the display. When the memory location was already occupied, the unit will overwrite the selected location without further notification.

Selecting a preset: briefly press a numeric button on the remote or push "<<RADIO PRESET" or "RADIO PRESET>>" on the unit's front panel to select a preset. This function is available only if more than one radio stations have been stored in the internal memory.

Station information: Press the "INFO" button repeatedly to browse through diverse information. The type of information and whether

information is displayed all depends on the selected broadcasting station.

Note: both FM and DAB+ tuner performance can be adversely affected by an active Ethernet connection.

For improved reception of weak FM radio stations, you can use an amplified indoor or outdoor antenna (available in specialized shops). When an FM cable network is available, it is possible to connect the unit to the cable network. Please beware ! Amplified antennas or cable networks can cause severe ground loops, and often foreign voltages are present on the signal lines.

In all cases, it is mandatory to use an FM separation transformer (available in specialized shops) to galvanically separate the PMR4000RMKIII and all other units in the audio chain from the external antenna or cable network. Failure to do so will result in unpredictable behavior and might cause damage to the PMR4000RMKIII and any other device connected to the system !!!

Controlling the PMR4000RMKIII using IOS® or Android® devices:

How to use the remote control app to control Apart PMR4000RMKIII using IOS® or Android ®devices such as Apple® Iphone®, Ipod touch® or Ipad®, and Android® based tablets and smartphones.

Download and install the UNDOK app from Frontier Silicon in the Apple® app store or search for the Frontier Silicon UNDOK app in the Android store. The app is available free of charge !

Now download and install the latest firmware on your PMR4000RMKIII player. This guarantees that your unit supports the app. In the PMR4000RMKIII menu, go to "system settings", "software update", and highlight "check now". When a new version is available, download and install it by following the instructions on the display of the unit.

Now open the app on your IOS® or Android® device and search for PMR4000RMKIII units within the network. Please note that the control device and the PMR4000RMKIII must be in the same network environment. When the unit is found, it will show up in the app. You now have to type the unit's net remote PIN code to allow the app to access and control the PMR4000RMKIII. Standard PIN code is 1234. You can change this code on the PMR4000RMKIII: "menu", "system settings", "network", "net remote PIN setup".

When more than 1 unit is present in the same network, you can change the "friendly name" or display name to make life easier. Make sure the PMR4000RMKIII is connected to the network. Look up its IP address. On the PMR4000RMKIII, go to "menu", "system settings", "network", "view settings" and scroll down to "IP address". On a computer registered in the same network, type the

IP address in the webbrowser's address bar.

A screen like this will show up:

network

Apert Internet Radio

192.168.0.83/web/index.html

Meest bezocht Aan de slag Web Slice Gallery Paging Chime

apart
Sounds like the right choice

Language: English

Status

System Information

Friendly Name: APART PMR4000R MKII 00226109b090

New Friendly Name:

Firmware: ir-mmi-FS2026-0500-0143_V2.6.12.EX51098-1A7

Radio ID: 00226109B090

Ethernet Status

Wired Interface: Enabled

Ethernet MAC Address: 00:22:61:09:b0:91

WiFi Status

WiFi Interface: Disabled

Network Status

DHCP: Enabled

IP Address: 192.168.0.83

Subnet Mask: 255.255.255.0

Gateway Address: 192.168.0.254

Primary DNS Address: 192.168.0.1

Secondary DNS Address:

In this text field, type a new "friendly name" for your unit and click the "Apply" button. Your PMR4000RMKIII will show up in the app with this name! You can look up the friendly name on the unit: "menu", "system settings", scroll down to "info" and scroll down to "friendly name". The web server will also show the current Ethernet, Wifi and network status of the PMR4000RMKIII.

Technical specifications	
USB/UPnP	
Supported audio codecs	MP3 32-320 kbps and variable bitrate, WMA, FLAC, WAV, ID3 tags support
USB memory file system	FAT, FAT32
USB memory capacity	up to 128 GB
S/N ratio	>90 dB
THD	<0.05%
Frequency range	20 Hz - 20 kHz
Tuner	
tuning range	FM 87.5 108MHz DAB 174.928-239.200 MHz
Nr of presets	10
Sensitivity (26dB S/N) @ 75Ω unbalanced	1.0 µV
Channel selectivity (67.5KHz)	40 dB
Tuning step size	50 kHz
Audio S/N ratio FM	50 dB
Audio bandwidth +/-1.5dB	30 - 15 kHz
THD	< 0.3%
Stereo separation	> 40 dB @ 1 kHz
Internet radio	
Audio streams	MP3 / WMA
Customizable favourites	via web portal
Nr of presets	10

Wifi	
2.4 GHz / 5 GHz	802.11 g
Authentication	Open, Pre-shared key (PSK), Wifi protected access (WPA) or WPA2
Channels	selectable per country
Ethernet	
Connector	standard RJ45 network port
General	
Power supply	230 VAC / 50 Hz
Power consumption	max 30 W
Power consumption standby	1 W
Adjustable audio output level	0 to 1 VRMS
Output impedance	less than 1 k Ω at max setting
Digital output	Toslink® SPDIF format 16BIT / 44.1 kHz
Accessories supplied	Mains power cable, IR remote control unit, Wifi antenna, FM DAB+ antenna wire
Remote control battery	2 pcs type AAA type LR03
Operating temperature	10-40 °C
Relative humidity	10 to 80% non-condensing
Dimensions (l x w x h)	484 (430) x 325 (300) x 44 mm
Weight	3850 g

Info from Apart

The reason for a transmission stop is mostly caused by a network problem.

For a proper working of the PMR4000RMKIII, there are some things to check on the network (an intervention of the network administrator might be needed):

- **Ports 88 and 2244 needs to be routed.**
- **The PMR4000RMKIII is mostly downloading data and less uploading. Some routers, mostly new and better models will see this as a threat and they will block data to the connected device.**
- **You need to reconfigure the router to avoid that he takes this action.**
- **New and better routers sometimes are equipped with a kind of sleep function. When there is no data transmission for a certain time, they go into sleep-mode. This function also needs to be set inactive.**

To be sure there is no problem in the PMR4000RMKIII, you can always test the device on a dedicated network with a very cheap and simple router.

The Spotify Software is subject to third party licenses found here:
<https://www.spotify.com/connect/third-party-licenses>

[illegible]

[illegible]

[illegible]

**developed
by**
Apart Audio NV
Industriepark Brechtsebaan 8 bus 1
2900 Schoten - Belgium

Company names, product names and trademarks are property of their
respective owners.

Apart-Audio specifications are subject to change without notice.

