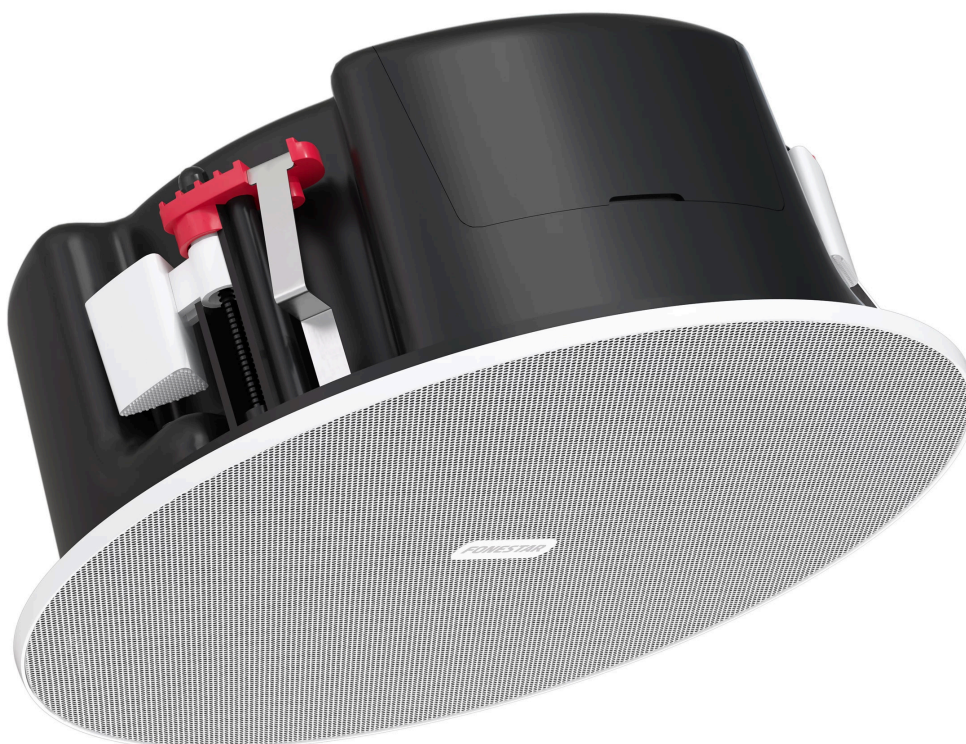


PUBLIC ADDRESS / SPEAKERS / CEILING

# SKY-6T-DOME

6" CEILING LOUDSPEAKER WITH 100 V LINE TRANSFORMER AND LOW IMPEDANCE



IP65


SALT MIST  
RESISTANCE

3-POINT  
ANCHORAGE


ANTI-DROP SYSTEM



DOME



POWER SELECTOR


TAPLOCK  
TERMINALS

TURN-LOCKABLE  
GRILLE

- ✓ Protective dome type back cover
- ✓ Low profile aluminium grille
- ✓ Fast connection terminals and high conductivity. In junction box
- ✓ Anti-fall system for installation assistance
- ✓ Stable ceiling mounting brackets



+ Info:

<https://fonestar.com/SKY-6T-DOME>

## ESPECIALLY RECOMMENDED IN:



Hospitality



Retail



Hotels



All sectors

## DESCRIPTION

100 V line transformer and low impedance ceiling loudspeaker. Design by Fonestar products are born from in-depth research and active customer feedback, turning their needs into competitive solutions. The innovative SKY series of ceiling loudspeakers is full of details that make them special. The innovative SKY series of ceiling speakers is full of details that make them special. Carefully tailored to reproduce the best sound and meet the needs of audio installations. We have created the SKY series of ceiling loudspeakers to offer a unique solution. We provide improvements in the installation, a defined sound for background music and sound reinforcement. We have carefully selected the materials and components to obtain the best performance and reliability, with an amazing sound. Rounding up our idea of the best ceiling loudspeaker. The grille is the only visible part of the loudspeaker once installed in the ceiling, so we have designed it to have minimal visual impact, frameless and a low profile. It is built in aluminium with high resistance liquid paint. No rust stains will appear and it will keep its original appearance. It can be customised by removing the removable logo and it can be painted. The connection of the cables is made with innovative quick-connect terminals, which offer an instant connection with a secure anchoring system and maximum conductivity. The ceiling loudspeaker has an anti-fall system to aid installation, allowing the loudspeaker to be positioned prior to final installation with the ceiling fixing brackets. In addition, it has a hook for speaker attachment a safety cable. It has a very stable ceiling attachment system with three brackets and a worm screw adjustment system. Installation is quick and easy and provides a firm and secure hold. The main component for sound playback is the coaxial loudspeaker, with a heavy-duty polypropylene diaphragm and a swivelling tweeter that can be steered to improve the sound experience. It has a wide frequency response, with an optimal balance between low and high frequencies. The rear dome cover has a reduced height that allows the loudspeaker to be installed in ceilings with limited space. Provides protection in humid and dusty environments. The speaker and dome cover have been tuned to provide a rich low-frequency sound, unique in this class of loudspeakers. The loudspeaker has an IP-65 dust and water ingress protection rating. Splashing will not affect the performance of the loudspeaker. For background music and sound reinforcement systems in shopping centres, shops, hotels, hospitals, business centres, restaurants, etc.



+ Info:

<https://fonestar.com/SKY-6T-DOME>

## TECHNICAL CHARACTERISTICS

|                       |   |
|-----------------------|---|
| FEATURES              | <p>100 V line transformer and low impedance ceiling loudspeaker.</p> <p>Protective dome type back cover.</p> <p>Low profile frameless grille, constructed from rust resistant aluminium. Detachable, turn-lockable. The logo can be removed and the speaker can be painted.</p> <p>Fast connection terminals and high conductivity.</p> <p>Junction box in the rear cover with inlet and outlet port.</p> <p>Anti-fall system for installation assistance.</p> <p>Hook for safety cable.</p> <p>Stable, worm-gear ceiling brackets.</p> <p>Installation in ceilings with limited space.</p> <p>Protection against dust and water.</p> |
| POWER                 | <p>20 W RMS</p> <p>25 W MAX.</p>  |
| SPEAKER               | <p>Coaxial loudspeaker.</p> <p>6" polypropylene woofer</p> <p>1" swivelling tweeter</p>   |
| RESPONSE              | <p>45-20,000 Hz @ -10 dB</p> <p>60-20,000 Hz @ -3 dB</p>  |
| IMPEDANCE             | <p>20 W RMS@100 V (500 Ohm)</p> <p>10 W RMS@100 V (1,000 Ohm)</p> <p>5 W RMS@100 V (2,000 Ohm)</p> <p>2.5 W RMS@100 V (4,000 Ohm)</p> <p>8 Ohm</p>  |
| SENSITIVITY           | 90 dB @ 1 W/1 m   |
| SOUND PRESSURE        | <p>103 dB @ max. W/1m Continuous</p> <p>106 dB @ max. W/1m Peak</p>   |
| COVERAGE ANGLE        | H/V (-6 dB): 125°@500Hz, 150°@1kHz, 60°@2kHz, 60°@4kHz  |
| PROTECTIONS           | <p>IP-65 in compliance with EN 60529</p> <p>EN ISO 9227:2006 Neutral Salt Spray Test</p>  |
| MATERIAL              | <p>ABS (UV resistant)</p> <p>Liquid paint aluminium grille</p>  |
| CONNECTORS            | <p>Highly conductive quick-connect terminals</p> <p>For 0.4 ~ 4 mm² cross section cable</p> <p>Junction box in the rear cover with inlet and outlet port</p>  |
| SWITCH                | <p>W selector in high Z and 8 Ohm.</p> <p>Accessible from the front.</p>  |
| OPERATION TEMPERATURE | -20°C ~ 70°C (48 h)   |
| STORAGE TEMPERATURE   | 10°C ~ 40°C   |
| MAXIMUM HUMIDITY      | 95%   |
| COLOUR                | White (RAL 9003)  |



+ Info:

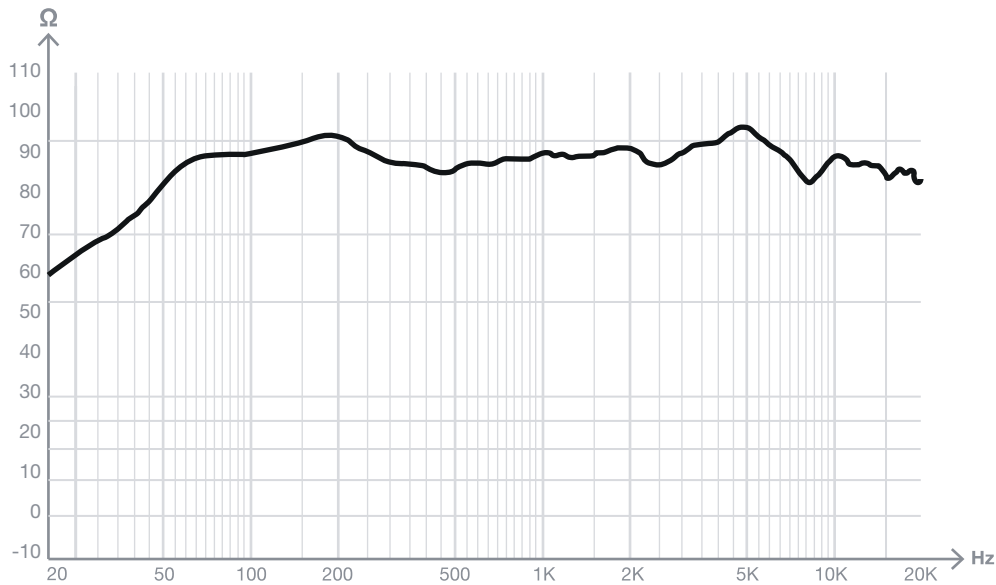
<https://fonestar.com/SKY-6T-DOME>

|             |   |
|-------------|---|
| DIMENSIONS  | Total loudspeaker: 249 mm Ø x 95 mm height<br>Grille section: 5 mm<br>Recessed height: 90 mm<br>Installation hole: 219 mm Ø<br>Maximum ceiling thickness: 30 mm |
| WEIGHT      | 1.85 kg   |
| ACCESSORIES | Installation template   |

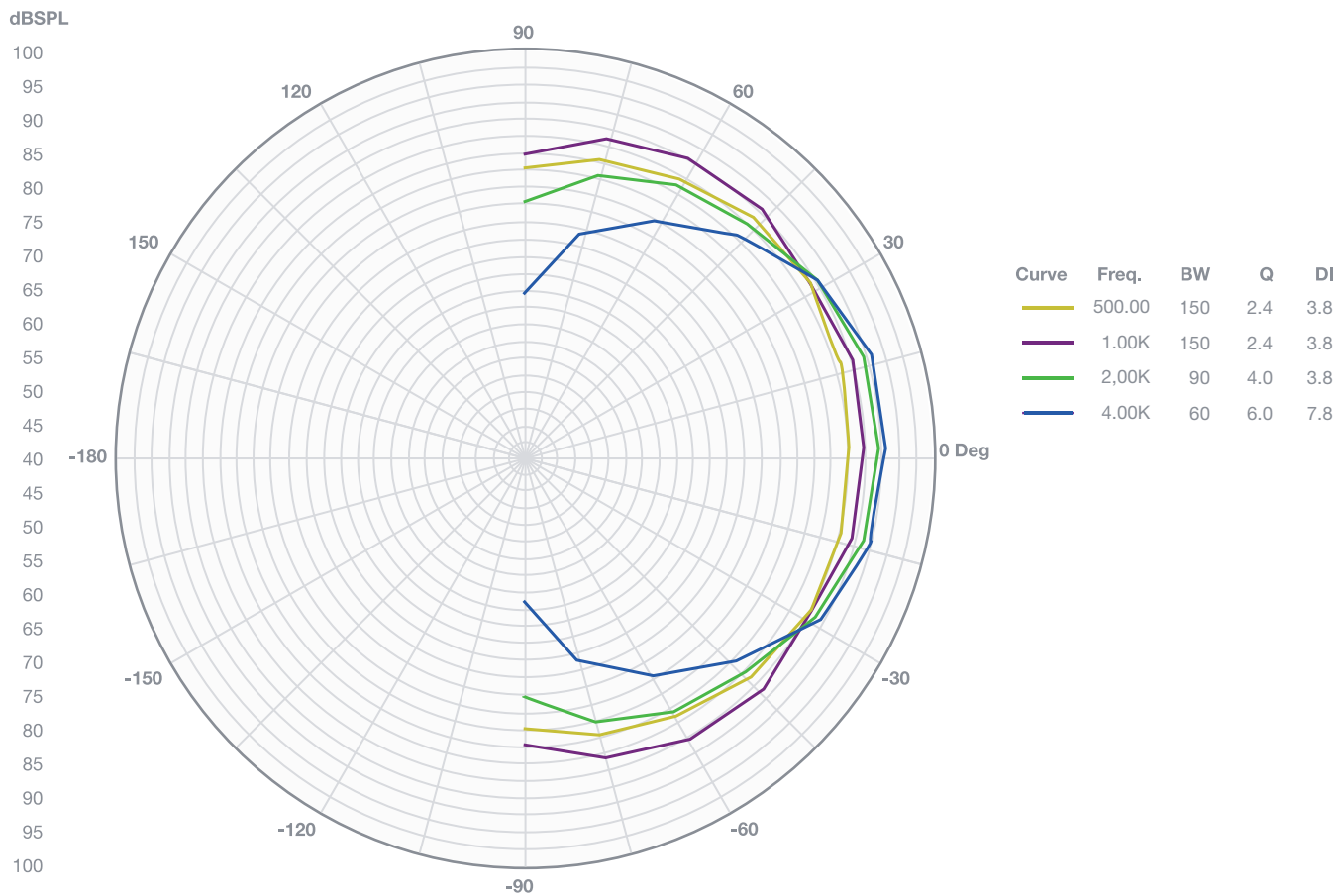


+ Info:  
<https://fonestar.com/SKY-6T-DOME>

SPL vs Frequency



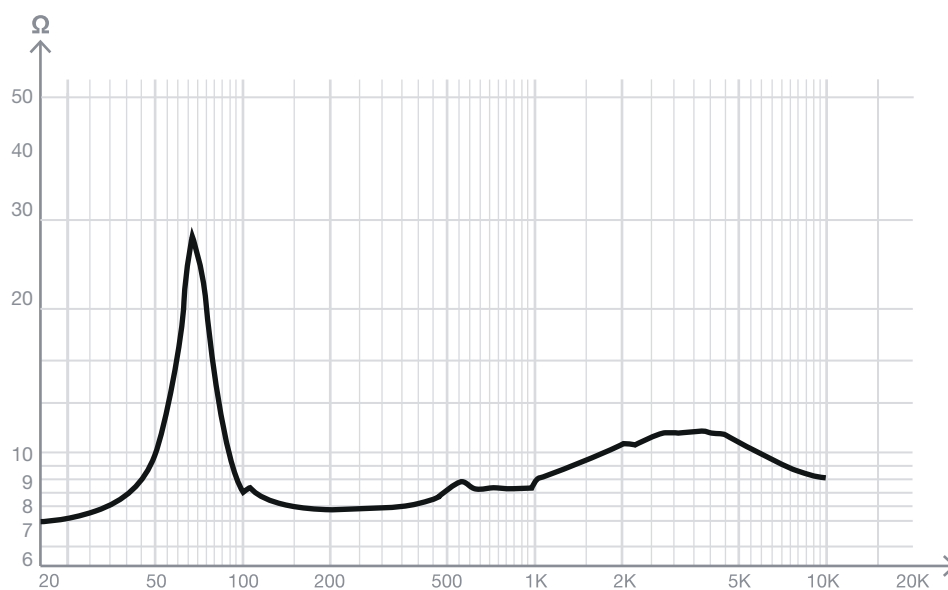
SPL vs Angle



+ Info  
<https://fonestar.com/SKY-6-DOME>



### Impedance vs Frequency



+ Info

<https://fonestar.com/SKY-6-DOME>